

MOVING VENUE X SOMERSET HOUSE

SUMMER SEASON

SOMERSET HOUSE | MOVING VENUE

DATES AVAILABLE THROUGHOUT JUNE & JULY



MOVING VENUE X SOMERSET HOUSE

SUMMER

SEASON

AT

SOMERSET HOUSE

2027

THE SUMMER'S MOST COVETED DESTINATION

SUMMER 2027

Following a successful inaugural season in 2026, Somerset House and Moving Venue return for Summer Season 2027, offering an exclusive opportunity to host extraordinary events in London's iconic courtyard, The Edmond J. Safra Fountain Court. For a limited time across the summer season, this Grade I-listed setting is transformed with elegant, purpose-built structures that showcase the remarkable architecture and heritage of Somerset House while providing the scale, flexibility and comfort required for hosting events in the heart of London, creating a breathtaking setting for summer parties, corporate events, brand activations, weddings and private celebrations.

With exquisite catering provided by Moving Venue, expert production by Event Concept and creative freedom at its heart, this is a rare chance to create unforgettable events in one of the city's most prestigious cultural spaces.



SOMERSET HOUSE

Somerset House is the home of cultural innovators and a registered charity at the heart of London's creative scene, offering a unique setting where ideas thrive and events inspire.

The Edmond J. Safra Fountain Court is the iconic heart of Somerset House and one of London's most impressive architectural spaces. Framed on all sides by sweeping neoclassical wings, this vast courtyard sits at the centre of a Grade I-listed cultural landmark, offering a rare sense of scale, symmetry and spectacle.

At its centre, 55 dancing fountains bring movement and theatre to the space, while the surrounding architecture creates a dramatic sense of enclosure that feels both intimate and monumental. Rich in history and architectural detail, the elegant façades catch the light beautifully, showcasing centuries of craftsmanship against one of London's most celebrated cultural backdrops.

Centrally located between The Strand and the Thames, Somerset House is a London icon, recognisable, prestigious and deeply woven into the fabric of the city's cultural and creative life. The Edmond J. Safra Fountain Court is its crown jewel: timeless, atmospheric and unlike anywhere else.

THE VENUE





CONCEPT

The concept and design of the space is thoughtfully curated, elegant, understated, and styled to complement the grandeur of Somerset House's architecture.

Nestled within the Courtyard, a sophisticated glass structure allows guests to fully appreciate the surrounding neoclassical architecture and historic features while enjoying the comfort and flexibility of a contemporary event space. Inside, the styling combines neutral tones with natural textures and organic elements, creating a sense of comfort, sophistication and ease. Sculptural furniture, olive tree planters and thoughtfully designed bar installations provide a timeless backdrop while offering the perfect canvas for summer-inspired theming and creative expression.

This is your canvas: luxuriously pared-back yet infinitely adaptable. Introduce bespoke styling, vibrant florals, immersive entertainment or striking scenic elements that bring energy to your event and express your brand and personality. Whether you envision understated event design or a bold creative transformation, the space is yours to shape.

PERFECT FOR



SUMMER PARTIES

Our summer parties offer a unique blend of atmosphere and style.



WEDDING CELEBRATIONS

Host an unforgettable celebration in one of London's most iconic settings.



BRAND ACTIVATIONS

Create unforgettable brand moments in one of London's most iconic settings.



DINNERS

Host an exceptional dinner in a setting your guests will never forget.



DRINKS RECEPTIONS

Raise a glass in one of London's most atmospheric open-air settings.



PRODUCT LAUNCHES

Launch your product in a space that commands attention.



AWARDS & CHARITY EVENTS

We take care of every detail so you can focus on celebrating success.



PRIVATE PARTIES

The Courtyard offers a striking backdrop for a private party with real character.

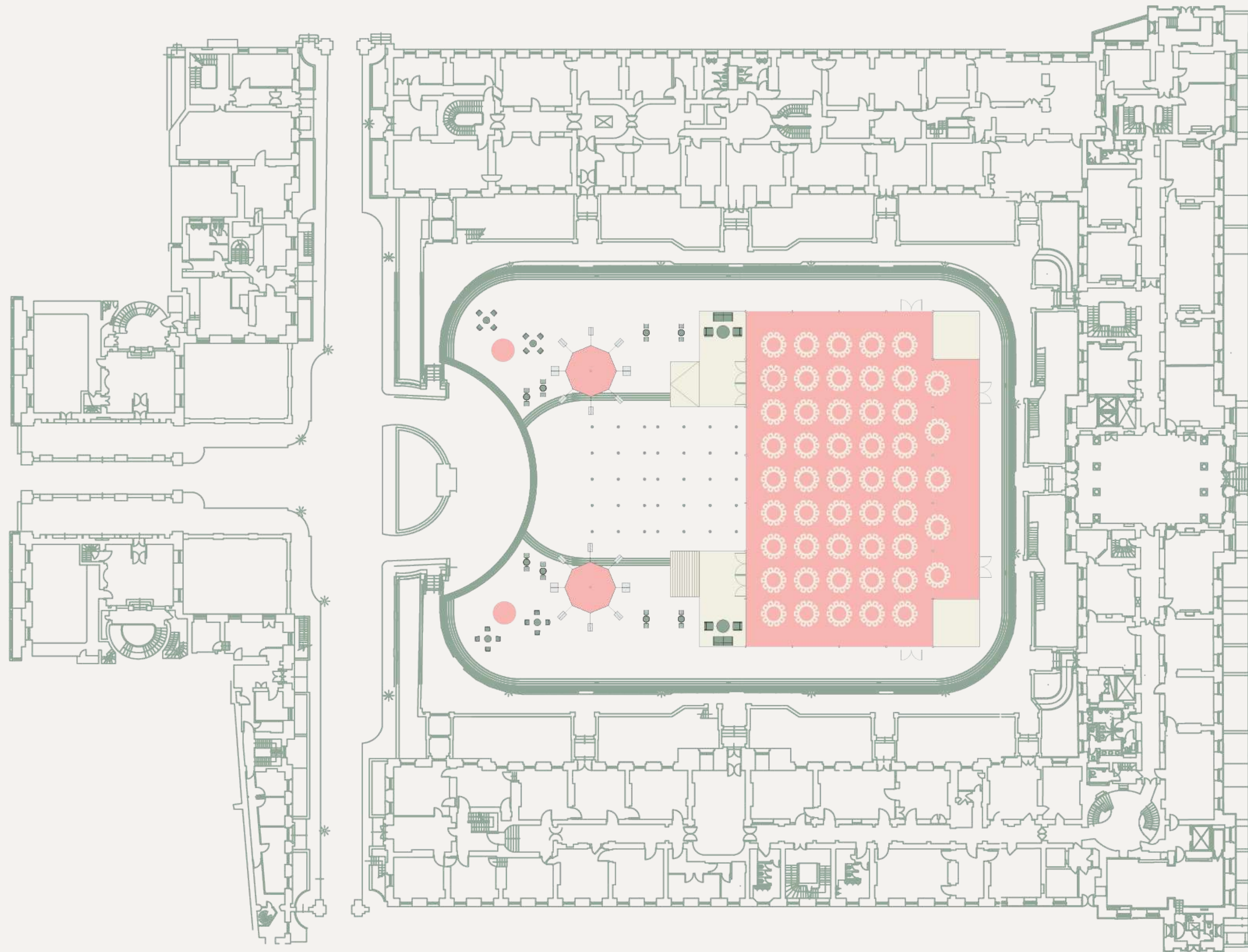


MOVING VENUE X SOMERSET HOUSE

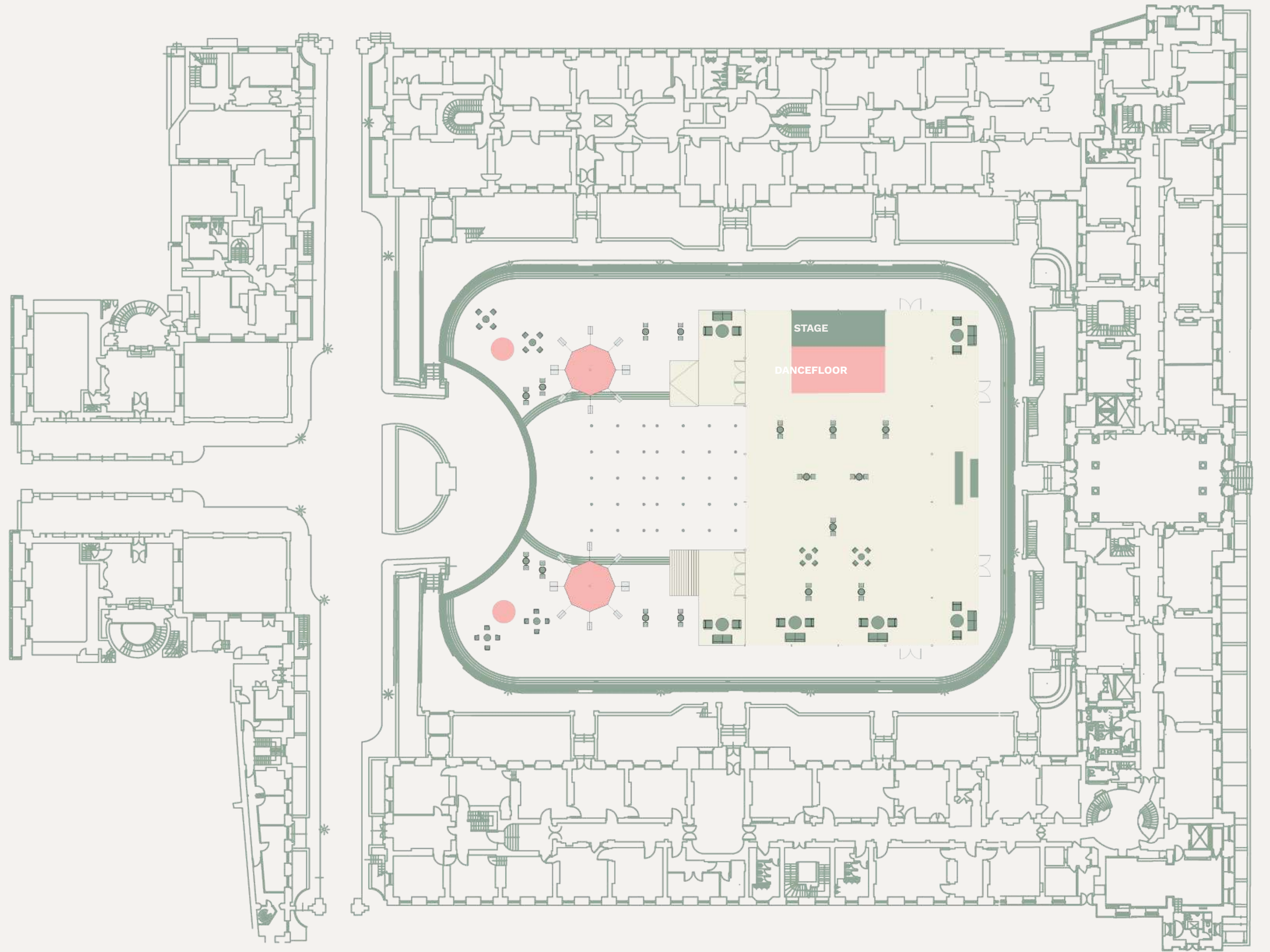
EXTERIOR

INTERIOR

FLOOR PLAN SEATED



FLOOR PLAN STANDING



PACKAGE INCLUSIONS

STRUCTURE INCLUSIONS:

- 35m x 20m pillar free clear structure, with an additional 35m x 5m at the rear including x2 draped off 5x5m corners for back of house and additional space for tables, bars or other activations. X2 10m x 5m terraces at the front as entrances
- X2 7.5m round sailcloth tents with centre poles and wooden planter ballasts, each hosting a 4.5m circular bar
- Furniture package for either standing or seated events
- All kitchen equipment
- Use of the fountains

PRODUCTION PACKAGE INCLUSIONS:

- Fully RGB controlled lighting of the sailcloth tents and exterior of the structure
- Fully RGB controlled uplighting to Somerset House
- Lighting within the structure including focused lighting for stage wash and bar
- Upgrade packages to include stage and dancefloor
- Distributed PA system to the structure
- DJ equipment and booth
- Handheld microphones
- All control, rigging and power distribution

From your initial enquiry through to the final moments of your event, you'll be supported by a dedicated team from both Somerset House and Moving Venue. Our experienced event professionals will work closely with you at every stage, guiding you through your event journey, from concept to delivery.

Bespoke and tailored upgrades are available upon request.

EXQUISITE CATERING

MOVING VENUE

With over 40 years of experience at London's most iconic venues, and more than a decade as an accredited partner at Somerset House, Moving Venue brings precision, creativity, and calm authority to every event. We know the space, understand the logistics, and deliver with absolute attention to detail.

From beautifully presented dishes to striking food stations, and seamless behind-the-scenes service, our catering enhances every moment. For a setting of this calibre, you need a team that understands how to deliver without compromise.

TESTIMONIALS

“It’s been lovely working with the team to bring the event to life. It was a huge success overall and the space was incredible.”



“We just wanted to share how happy we were with the results of the event last night. We had great feedback so far! So thank you so much for working with us on delivering it.”



“Thank you again for looking after our guests so well on Thursday. The food was stunning and I received so many compliments. I have to say it’s the very best event food I’ve ever had and I’d include my own wedding in that! Thanks also to you and your team for looking after us so well – including your ops manager. I was really impressed with the chaps in the cloakroom who had a very cold and thankless task down there. I also appreciated your proactive, organised and warm manner. Really looking forward to working with you again.”



“Thank you both for all of your wonderful work on this event, I appreciate all of your time and patience helping us make this happen! We are hearing really wonderful things and only getting great feedback, which is frankly unprecedented in my line of work. We were so pleased with how smoothly things went and how well it all came together. I hope to work with you again for our next big event!”



SERLE COURT

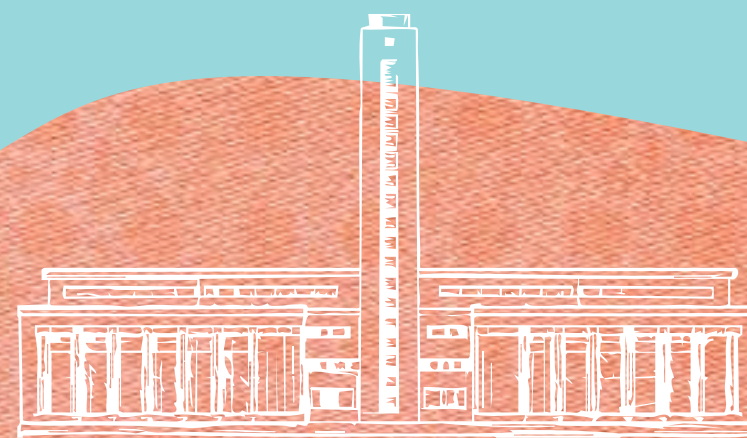
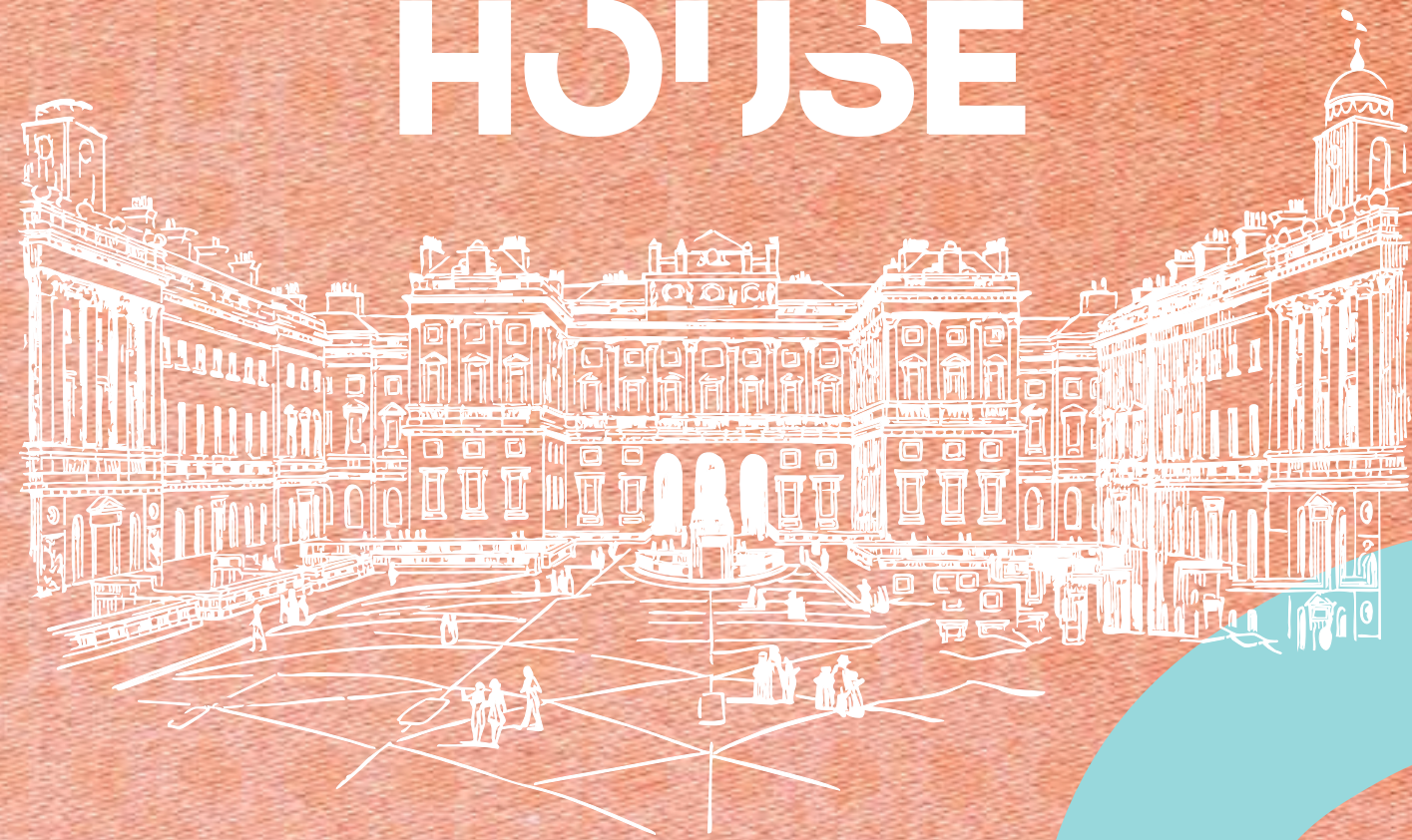
“A huge thank you for everything yesterday. It was such a pleasure to work with you, you were SO helpful every step of the way, from pre-event and throughout. All the staff were professional and friendly and the food was really delicious, I know we mentioned it a number of times onsite but it really was super tasty!

Thanks so much for everything and hope to work together again very soon!”



SOMERSET HOUSE

LOCATION



**SOMERSET HOUSE
STRAND, LONDON
WC2R 1LA**

TUBE

TEMPLE: CIRCLE & DISTRICT LINES
3-MINUTE WALK (250M)

COVENT GARDEN: PICCADILLY LINE
8-MINUTE WALK (650M)

EMBANKMENT: CIRCLE, DISTRICT,
NORTHERN & BAKERLOO LINES
10-MINUTE WALK (700M)

HOLBORN: CENTRAL LINE
11-MINUTE WALK (800M)

TRAIN

CHARING CROSS
10-MINUTE WALK (700M)

BLACKFRIARS
13-MINUTE WALK (1KM)

WATERLOO
15-MINUTE WALK (1.2KM)

BOAT

EMBANKMENT PIER
7-MINUTE WALK (600M)

LET'S MAKE
SUMMER 2027
YOUR MOST
MEMORABLE YET.

SUMMER
SEASON
2027

SOMERSET HOUSE | MOVING VENUE

DATES ARE AVAILABLE
THROUGHOUT JUNE
AND JULY 2027

To enquire or book your date:
020 7836 1099
somersethouse@movingvenue.com
somersethouse.org.uk/movingvenue